

BE
PUMPING
PARTNERS

General pump portfolio

hydroo®

HYDROO is present in all the European markets by means of a distribution network focused on the service and the valuation of the pumping business. HYDROO conceives, researches, develops, designs, industrializes, and manufactures a wide range of pumping solutions for the most demanding applications in industrial markets, irrigation, water supply and water treatment as well as in residential and commercial buildings. The values of operational excellence, experience, reliability, and passion for a well-done job guide the daily work of the Hydroo team together with our partners and distributors. The global challenges of water management require excellence in pumping technologies and a joint effort between designers, manufacturers, and pumping engineers. To meet the needs of the market in the more demanding installations Hydroo is firmly committed to manufacturing the best pumping equipment by following and sharing our values worldwide.

The Hydroo values are presented in 5 great concepts that we summarize in our motto Hy5, which are our principles and commitments:

BE PUMPING PARTNERS



Picture: Gorgs de les Planes de Hostoles
(Garrotxa county, Catalonia).

Lovely place where you can visit the three main gorges, the gorge of Santa Margarida, the gorge of La Plana and the gorge of Moli dels Murris. These natural pools of clean, transparent and fresh water together with its waterfall make it an idyllic and unique natural space.

Coordinates:
Longitude: 2.5482400
Latitude: 42.0721300



hymotion

Value proposal based on the reliability of products enhancing the quality, the development of efficient supply chains, the productivity with the love of craftsmen at every step of the manufacturing and production processes. We move with the commitment to improve pumping systems, make them more efficient, more reliable, more digitized, more at the service of the human development.



hyllite

Contribution to the preservation of the environment and sustainability. We reduce the environmental impact and the footprint of carbon. We contribute to the development of the circular economy. Our team stand out for the highest standards of energy efficiency.



hyficient

The use of the most advanced analytical, developed simulation tools allows us to optimize our R&D teamwork results. We maximize the study of materials, efficient hydraulics, mechanical improvements and the optimization of our motors up to 200 kW. The results are robust, reliable, flexible, adjustable, multipurpose, and user-friendly pumping equipment.



hynovative

Commitment to the implementation of the innovation process a strategic pillar of the company. Transfer new ideas to realities that evolve pumping industry and internalize the process in each job position to offer market improvements.



hyliance

We are the factory of our customers. Without solution of continuity between the value chain starting in the components production plants and ending with amortization of the pumping equipment operating at full performance for years and giving satisfaction to distributors, project engineers and pumping systems managers. We make real our catchphrase **Be Pumping Partners**.

A large industrial factory setting with various pieces of machinery, including pumps and robotic arms, under a high ceiling with exposed steel beams and lighting fixtures. The scene is dimly lit with a warm, orange-brown color palette.

hydroo®

HYDROO's pump portfolio presents pumping solutions for a wide range of applications: supply of drinking water, pressurization, fire-fighting equipment, deep well pumping, heating, ventilation and air conditioning, water distribution heating systems, drainage, sewage and charged waters, irrigation, desalination, reverse osmosis systems, ultrafiltration, industrial processes, etc.

Hydroo is a reliable player in business development with our distributors and partners. They endorse us experience and results: we build opportunities of joint business, we achieve the goals and we improve the well-being of users with reliable, high quality, durable, sustainable and efficient products.

BE
PUMPING
PARTNERS

9001/14001

ISO 9001, ISO 14001
Quality and commitment in
improvement of the environment

High efficiency products, versatility and flexibility, wide range of solutions. Hydroo is a reference brand in reverse osmosis and water treatment, in the contribution to quality and sustainable crops production, industrial solutions and residential and commercial applications

200.000

**200.000 units installed
in the industrial sector**

10.000/1.7200

**Solutions for flows up to 10.000 m³/h.
Powers up to 1 MW.
Pressures up to 72 bar (7.200 kPa)**

Best constructive materials used for our pumps. Standard versions in AISI304, AISI316 and AISI904 SS.

60

**We sell to 60 countries.
Distributors all over the
continents. Main partners in all
the European countries. We are
in the most important vendor
lists.**

Fast delivery time from the factory placed in Palol de Revardit (Catalonia-Spain)

10

**Corporate web
in 10 languages**

2 Application Engineering teams to provide a prompt and accurate attention to our customers and partners. The best solution to each particular pumping installation.

5.000/7

**5.000 sqm of production plant in
Palol de Revardit. International
group with 7 industrial plants in
the USA, Europe, India and China**

10/32

**10 families of pumping solutions.
32 series of products, millions of
possible models**

Our R&D teams have developed our own processes for CFD, mechanical advanced calculation, prototyping and patenting

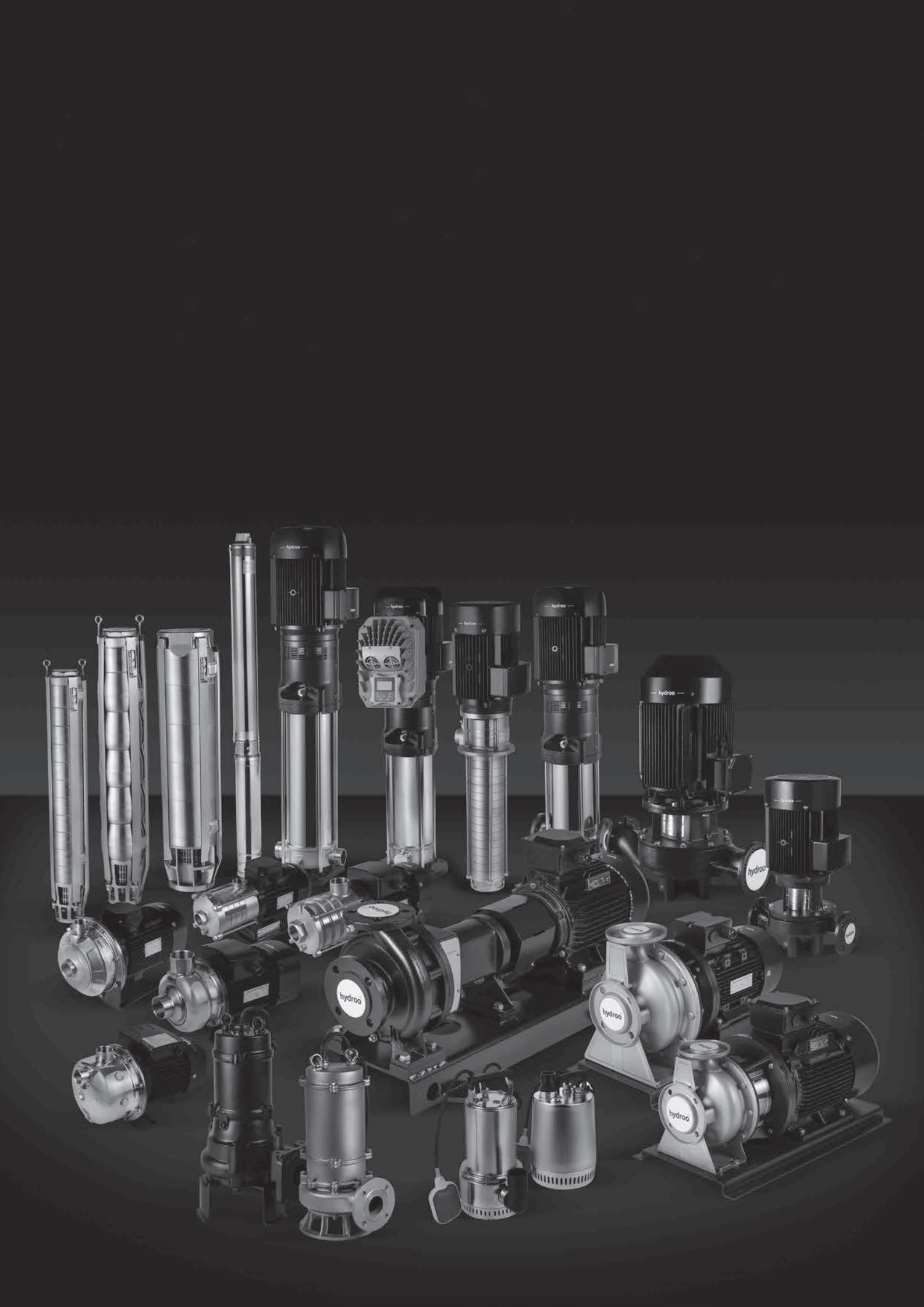
4/1.000/40/160

**4 test benches for testing up to 1.000 m³/h,
40 bar, 160 kw, according to ISO 9906:2012
Grade 3B**

Extensive level of services for the client: optimization of delivery times, HyV1deos marketing tools, Hy2ls online service, HyX3Net supply chain on-line management, Hy4Select online selection software, phone direct technical assistance, HyA6tance online after-sales service, close and friendly based commercial attention

50

**Present in more than
50 international fairs**



INDEX

VDROO SERIES

VF, VX Vertical multistage stainless steel centrifugal pump	08
VN, VD Vertical multistage stainless steel customized centrifugal pump	08
VTP, VTPS, VTPM High pressure twin pump set	09
VKF, VKX, VKN Immersion type multistage centrifugal pump	09
VYP Vertical multistage pump	10

HDROO SERIES

HYP Multistage horizontal pump	10
HF, HX, HN Horizontal multistage stainless steel centrifugal pump	11
HJ Stainless steel self-priming jet pump	11
HPRESS Smart booster set	12

MDROO SERIES

MX, MN Stainless steel horizontal single-stage centrifugal pump	12
MXO, MXC Open impeller single stage pump	13

NDROO SERIES

NSX, NSN Stainless steel horizontal single stage centrifugal pump	13
NLF, NLFX Single stage end suction centrifugal pump	14

HSC Single stage double suction split case pump	14
HHP Multistage high pressure horizontal pump	15
LS Vertical turbine pump	15
HZ Polymeric end suction pump	16
HQX Stainless steel self-priming gas-liquid pump	16

TDROO SERIES

TF, TX Vertical in-line circulation pump	17
TR, TRE, TRB, TRX Wet rotor circulating pump	17

KDROO SERIES

KN Stainless steel swimming pool pump	18
KOOLI Swimming pool pump	18

SDROO SERIES

SX, SN, SD Stainless steel submersible borehole pump	19
HYO, HYA Submersible motor	19
SXB 5" Submersible monoblock electropump	20
S3P, S3,5P 3", 3,5"submersible pump	20
ST4 4" submersible pump	21
SO4 4" rewindable oil filled submersible motor	21

WDROO SERIES

WRAINOX, WUP Submersible stainless steel vortex pump	22
WF, WX Submersible sewage pump	22
WG, WV Submersible sewage grinder and vortex pump	23
WPF,WPX Non-clogging self-priming sewage pump	23

EDROO SERIES

HC Pump controller	24
VSD1 – 5 Variable frequency driver	24

XDROO SERIES

XBOOST Variable speed booster set	25
XFIRE Fire-fighting set	25

VF, VX

Vertical multistage stainless steel pump

Applications
Cooling water system / Municipal water supply and boosting / Domestic water supply / Irrigation / General industrial services / Washing plants / Boiler feed and condensate system / Water treatment

Performance range
Flow range: up to 240 m³/h
Head: up to 305 m
Temperature: up to +120 °C
Speed: 2900 rpm or 3500 rpm
Power: up to 110 kW

Operation conditions
Clean, non-flammable and non-explosive liquid
Liquid temperature: -15 °C to +120 °C (180 °C)
Ambient temperature: up to +40 °C

Material
Cast Iron, AISI304 SS



VN, VD

Vertical multistage stainless steel customized pump

Applications
Municipal water supply / General industrial services / Water treatment / RO Systems / Ultrafiltration

Performance range
Flow range: up to 240 m³/h (VD from 25-240 m³/h)
Head: up to 305 m
Temperature: up to +120 °C
Speed: 2900 rpm or 3500 rpm
Power: up to 110 kW

Operation conditions
Clean, non-flammable and non-explosive liquid
Salty water allowed
Liquid temperature: -15 °C to +120 °C
Ambient temperature: up to +40 °C

Material
AISI316 SS, AISI904 SS, Duplex



VTP, VTPS, VTPM

High pressure twin pump set

Applications
Water treatment by ultrafiltration RO systems / Booster systems / High pressure flushing systems / Water supply / Seawater desalination

Performance range
Flow range: up to 55 m³/h
Head: up to 740 m
Temperature: up to +120 °C
Speed: 2900 rpm or 3500 rpm
Power: up to 55 kW

Operation conditions
Clean, non-flammable and non-explosive liquid
Liquid temperature: -15 °C to +120 °C
Ambient temperature: up to +40 °C

Material
AISI304 SS, AISI316 SS, AISI904 SS, Duplex



VKF, VKX, VKN

Immersion type multistage pump

Applications
Machine tools cooling systems / Industrial washing systems / Chiller units / Industrial filtration systems / Other industrial applications

Performance range
Flow range: up to 55 m³/h
Head: up to 305 m
Temperature: up to +120 °C
Speed: 2900 rpm or 3500 rpm
Power: up to 45 kW

Operation conditions
Clean non-explosive liquid
Coolant fluids and cutting lubricating liquids
Liquid temperature: -15 °C to +70 °C
Warm water type: -15 °C to + 120 °C

Material
Cast Iron, AISI304 SS, AISI316 SS



VYP



Vertical multistage pump

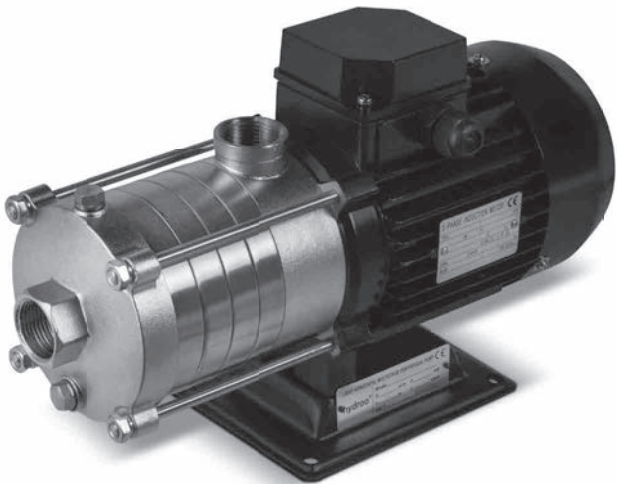
Applications
Cooling water system / Domestic water supply / Irrigation / Washing plants

Performance range
Flow range: up to 18 m³/h
Head: up to 140 m
Temperature: up to +40 °C
Speed: 2900 rpm
Power: up to 4 kW

Operation conditions
Clean, non-flammable and non-explosive liquid

Material
Impellers in AISI304 SS
Suction an discharge in Cast Iron
Diffusers in Technopolymer

HF, HX, HN



Horizontal multistage stainless steel pump

Applications
Cooling water system / Aquiculture / Domestic water supply / General industrial services / Washing / Environment protection

Performance range
Flow range: up to 32 m³/h
Head: up to 88 m
Temperature: up to +110 °C
Speed: 2900 rpm or 3500 rpm
Power: up to 7,5 kW

Operation conditions
Clean, non-flammable and non-explosive liquid
Liquid temperature: -15 °C to +110 °C
Ambient temperature: up to +40 °C

Material
Cast Iron, AISI304 SS, AISI316 SS

HYP

Horizontal multistage pump

Applications
Cooling water system / Domestic water supply / Irrigation / Washing plants

Performance range
Flow range: up to 7,2 m³/h
Head: up to 55 m
Temperature: up to +40 °C
Speed: 2900 rpm
Power: up to 1,1kW
Self priming: up to 2 m

Operation conditions
Clean, non-flammable and non-explosive liquid

Material
Impellers in AISI304 SS
Suction an discharge in Cast Iron
Diffusers in Technopolymer



HJ

Stainless steel self-priming jet pump

Applications
Water supply from wells or reservoirs / Domestic, civil and industrial applications / Garden and irrigation

Performance range
Flow range: up to 5 m³/h
Head: up to 50 m
Temperature: up to +60 °C
Speed: 2900 rpm
Power: up to 0,75 kW
Self priming: up to 9 m

Operation conditions
Clean, non-flammable and non-explosive liquid
Liquid temperature: -15 °C to +60 °C
Ambient temperature: up to +40 °C

Material
AISI304 SS



HPRESS

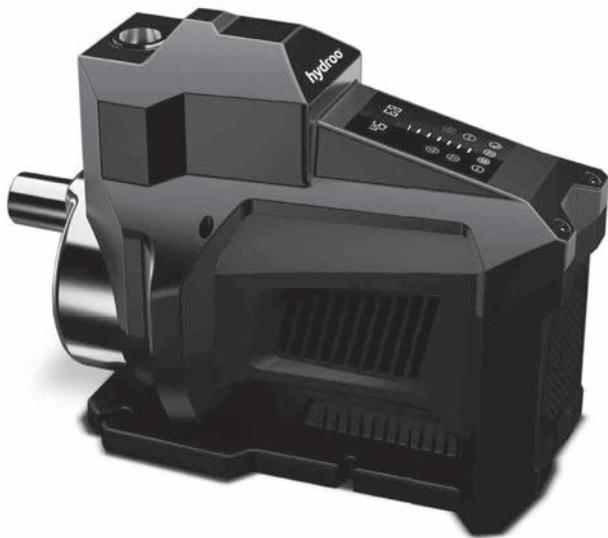
Smart booster set

Applications
Domestic water supply and boosting / Garden and irrigation / General industrial

Performance range
Flow range: up to 6 m³/h
Head: up to 50 m
Temperature: up to +40 °C
Speed: 2900 rpm up to 5.000 rpm
Power: up to 0,75 kW
Self priming: up to 8 m

Operation conditions
Clean, non-flammable and non-explosive liquid
Available operation in parallel up to 2 units

Material
AISI304 SS
Diffusers in Technopolymer



MXO, MXC

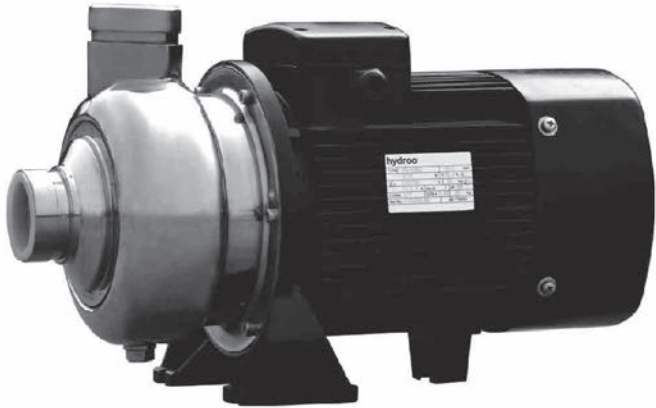
Open impeller single stage pumps

Applications
Cooling systems / Main HVAC applications / Industrial washing machines / Supply of water in buildings / Farms or fountains

Performance range
Flow range: up to 60 m³/h
Head: up to 22 m
Temperature: up to +90 °C
Speed: 2900 rpm
Power: up to 3 kW

Operation conditions
Clean, non-flammable and non-explosive liquid

Material
AISI304 SS



MX, MN

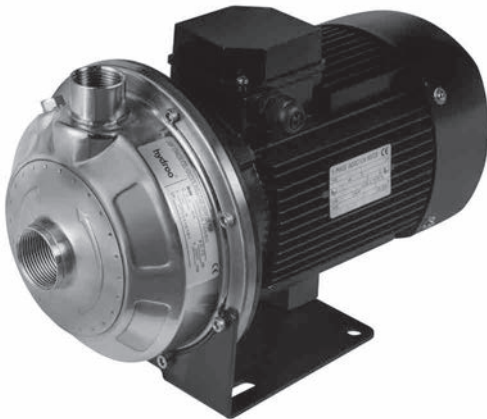
Stainless steel horizontal single-stage pump

Applications
Water treatment systems / Water supply for family houses, for small hotel and small office buildings / Garden and irrigation systems / Other pressure boosting systems

Performance range
Flow range: up to 26 m³/h
Head: up to 40 m
Temperature: up to +85 °C
Speed: 2900 rpm or 3500 rpm
Power: up to 2,2 kW

Operation conditions
Clean, non-flammable and non-explosive liquid

Material
AISI304 SS, AISI316 SS



NSX, NSN

Stainless steel horizontal single-stage pump

Applications
Cooling water / Water supply / Distribution / Drainage / General industrial services

Performance range
Flow range: up to 200 m³/h
Head: up to 70 m
Temperature: up to +100 °C
Speed: 2900 rpm or 3500 rpm
Power: up to 37 kW

Operation conditions
Clean, non-flammable and non-explosive liquid

Material
AISI304 SS, AISI316 SS



NLF, NLFX

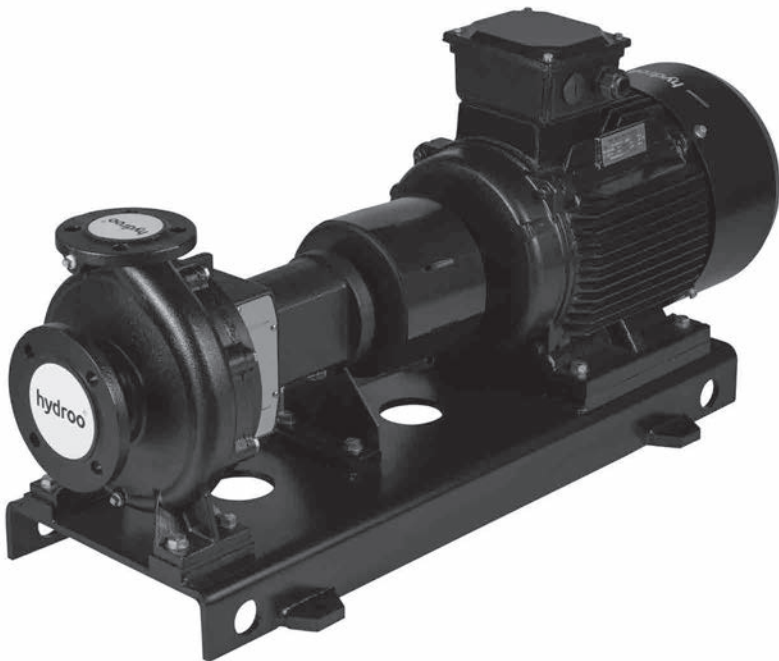
Single stage end suction pump

Applications
Cooling water / Water supply / Distribution / Drainage / General industrial services

Performance range
Flow range: up to 800 m³/h
Head: up to 160 m
Temperature: up to +110 °C
Speed: 1450/2900 rpm or 1750/3500 rpm
Power: up to 160 kW

Operation conditions
Clean, non-flammable and non-explosive liquid

Material
Cast Iron, Bronze, AISI304 SS, AISI316 SS, Duplex



HHP

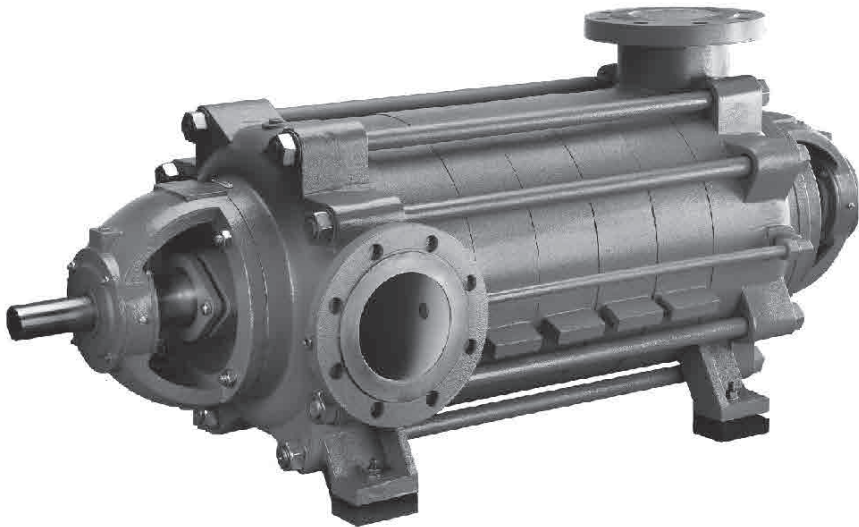
Multistage high pressure horizontal pump

Applications
Municipal water supply & drainage / Small boiler feed systems / Water supply for high buildings / Mining drainage / Seawater desalination / Gardening irrigation systems / Firefighting systems / Other industrial systems

Performance range
Flow rate: 3.75 ~ 1020 m³/h
Head: 19 ~ 1080 m
Temperature: up to +80 °C

Operation conditions
Horizontal multistage pump
Bare shaft versions with flexible coupling and standard electric motors

Material
Cast Iron, Cast steel, Stainless steel



HSC

Single stage double suction split case pump

Applications
Cooling water / Water supply / Fire protection / Metal manufacturing / Irrigation / Distribution / Drainage / General industrial services / Seawater

Performance range
Flow range: up to 10.000 m³/h
Head: up to 200 m
Temperature: up to +110 °C
Speed: 710 rpm up to 3500 rpm

Operation conditions
Clean, non-flammable and non-explosive liquid

Material
Cast Iron, Bronze, AISI304 SS, AISI316 SS, Duplex



LS

Vertical turbine pump

Applications
Cooling Water / Seawater and raw water intake / Industrial process pumps / Utility circulating water / Condenser circulating water pumps / Ash sluice / Fire-fighting

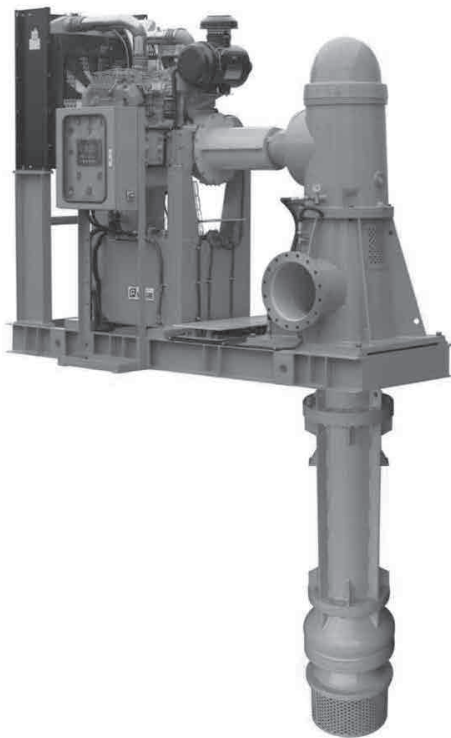
Performance range
LSC: Single or multistage pump with centrifugal or mixed-flow enclosed type impeller, designed for high pressure service

LSM: Single stage pump with mixed-flow semi-open or enclosed type impeller, designed for high capacity, medium to high head services

LSA: Single stage pump with axial-flow impeller, designed for high capacity, low head services

LSG: Right angle gear box driven vertical turbine pump

Material
Cast Iron, Bronze, AISI304 SS, AISI316 SS, Duplex



HZ

Polymeric end suction pump

Applications
Alkali & acid production / Metal smelting industry / Chemical synthesis / Paper-making industry / Pickling processes in electroplating / Other corrosive liquids transferring

Performance range
Flow range: up to 60 m³/h
Head: up to 52 m
Temperature: up to +120 °C
Speed: 2900 rpm
Power: up to 18,5 kW

Operation conditions
Clean liquids
Medium density: Max 1.35x 103kg/m³
Pressure: Max 10bar

Material
FEP = Fluorinated ethylene propylene



TX, TF

Vertical in-line circulation pump

Applications
Cooling water / Water supply / Distribution / Drainage / Irrigation / General industrial services / Boosting

Performance range
Flow range: up to 750 m³/h
Head: up to 90 m
Temperature: up to +110 °C
Speed: 1450/2900 rpm or 1750/3500 rpm
Power: up to 132 kW

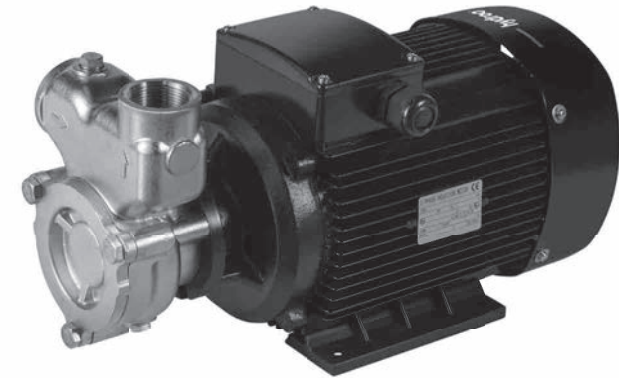
Operation conditions
Clean, non-flammable and non-explosive liquid

Material
Cast Iron, AISI304 SS



HQX

Stainless steel self-priming gas-liquid pump



Applications
Alkali & acid production / Metal smelting industry / Chemical synthesis / Paper-making industry / Pickling processes in electroplating / Other corrosive liquids transferring

Performance range
Flow range: up to 18 m³/h
Head: up to 70 m
Temperature: up to +120 °C
Speed: 2900 rpm
Power: up to 7,5 kW
Gas-liquid ratio 1:9 (Gas suction volume 8-10%)

Operation conditions
Clear and low viscosity liquids

Material
AISI304 SS

TR, TRE, TRB, TRBE, TRX



Wet rotor circulating pump

Applications
Domestic boilers / Air conditioning systems

Performance range
Flow range: up to 10 m³/h
Head: up to 8,5 m
Speed: 2900 rpm
Power: up to 230 W
TR / TRB / TRX: 3 speeds
TRE / TRBE: electronic

Operation conditions
Clean, non-flammable and non-explosive liquid

Material
Casing Cast Iron
Impeller Technopolymer
Shaft an bearing in ceramics



KN

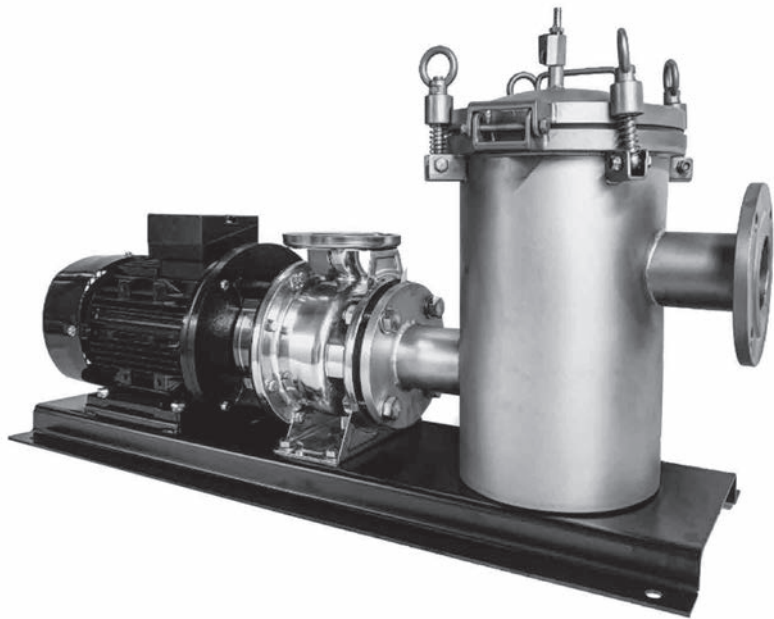
Stainless steel swimming pool pump

Applications
Water filtration in comercial and large swimming pools

Performance range
Flow range: up to 200 m³/h
Head: up to 70 m
Temperature: up to +100 °C
Speed: 2900 rpm or 3500 rpm
Power: up to 37 kW

Operation conditions
Clean, non-flammable and non-explosive liquid

Material
AISI316 SS



SX, SN, SD

4", 6", 8", 10", 12" stainless steel submersible pump

Applications
Water supply from deep wells and dams / Irrigation / Sprinkling and boosting / Fire-fighting applications / Washing systems / Mining

Performance range
Flow range: up to 540 m³/h
Head: up to 450 m
Temperature: up to +50 °C
Speed: 2900 rpm or 3500 rpm
Power: up to 350 kW
Immersion depth: up to 300 m
Sizes: 4" to 12"

Operation conditions
Clean, non-flammable and non-explosive liquid

Material
AISI304 SS, AISI316 SS, Duplex



KOOLI

Residential swimming pool pump

Applications
Water filtration in residential swimming pools

Performance range
Flow range: up to 33 m³/h
Head: up to 23 m
Temperature: up to +40 °C
Speed: 2900 rpm
Power: up to 2,2 kW

Operation conditions
Clean, non-flammable and non-explosive liquid

Material
Hydraulic part in Technopolymer
Shaft in AISI316 SS
Mechanical seal in CSi/Graphite/AISI316 SS



HYO, HYA

4" – 10" rewindable oil filled and water ncooled submersible motor

Applications
Borehole wells / Open tanks / Dams

Performance range
Temperature: up to +50 °C
Speed: 2900 rpm or 3500 rpm
Power: up to 250 kW
Immersion depth: up to 250 m
Sizes: 3" to 10"

Material
AISI304 SS, AISI316 SS, Duplex



SXB

5” compact submersible pump

Applications
For water supply from wells or reservoirs /
For domestic use, for civil and industrial applications /
For garden use and irrigation

Performance range
Flow range: up to 8,5 m³/h
Head: up to 110 m
Temperature: up to +40 °C
Speed: 2900 rpm
Power: up to 2 kW
Sand content: 50 g/m³
Immersion depth: up to 50 m
Size: 5”

Operation conditions
Clean, non-flammable and non-explosive liquid

Material
AISI304 SS, POM



S3P, S3,5P

3”, 3,5” submersible pump

Applications
For water supply from wells or reservoirs /
For domestic use, for civil and industrial applications /
For garden use and irrigation

Performance range
Flow range: up to 6 m³/h
Head: up to 155 m
Temperature: up to +40 °C
Speed: 2900 rpm
Power: up to 1,1 kW
Sand content: 150 g/m³
Immersion depth: up to 120 m
Sizes: 3” and 3,5”

Operation conditions
Clean, non-flammable and non-explosive liquid

Material
AISI304 SS, POM
Check valve in AISI304 SS



ST4

4” submersible pump

Applications
For water supply from wells or reservoirs /
For domestic use, for civil and industrial applications /
For garden use and irrigation

Performance range
Flow range: up to 24 m³/h
Head: up to 300 m
Temperature: up to +40 °C
Speed: 2900 rpm
Power: up to 7,5 kW
Sand content: 150 g/m³
Immersion depth: up to 120 m
Sizes: 4”

Operation conditions
Clean, non-flammable and non-explosive liquid

Material
AISI304 SS, POM
Check valve in AISI304 SS



SO4

4” rewindable oil filled, water cooled submersible motor

Applications
Borehole wells / Open tanks / Dams

Performance range
Temperature: up to +50 °C
Speed: 2900 rpm or 3500 rpm
Power: up to 7,5 kW
Immersion depth: up to 120 m
Sizes: 4”

Material
AISI304 SS



WRAINOX, WUP

Submersible stainless steel vortex pump

Applications
Raw water / Domestic and semi-industrial waster water / Rain water / Sewage works / General industrial services / Construction

Performance range
Flow range: up to 36 m³/h
Head: up to 20 m
Temperature: up to +40 °C
Speed: 2900 rpm or 3500 rpm
Power: up to 1,5 kW
Solid diameter < 45 mm

Operation conditions
Non-flammable and non-explosive liquid

Material
AISI304 SS
Double mechanical seal



WG, WV

Submersible sewage grinder and vortex pump

Applications
Raw water / Domestic and semi-industrial waster water / Rain water / Sewage works / General industrial services / Construction

Performance range
Flow range: up to 80 m³/h
Head: up to 47 m
Temperature: up to +40 °C
Speed: 2900 rpm
Power: up to 11 kW

Versions
Grinder and Vortex impellers

Material
Cast iron



WF, WX



Submersible sewage pump

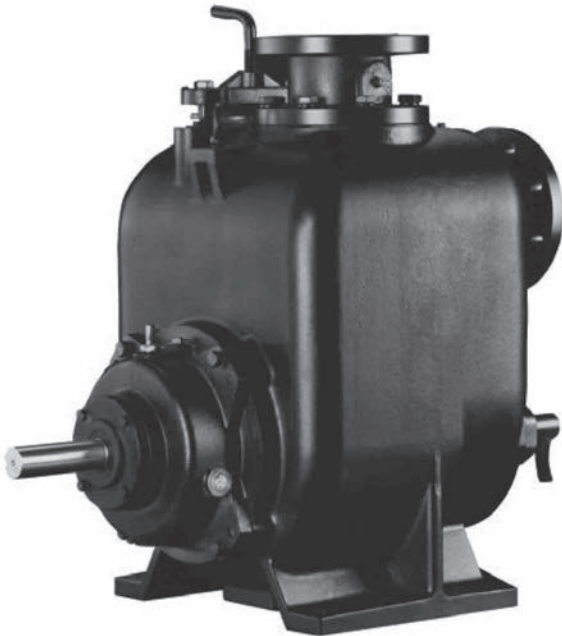
Applications
Raw water / Domestic and semi-industrial waster water / Rain water / Sewage Works / General industrial services / Construction

Performance range
Flow range: up to 1100 m³/h
Head: up to 66 m
Temperature: up to +40 °C
Speed: 2900 rpm, 1450 rpm or 980 rpm
Power: up to 75 kW

Versions
Double and multiple channel

Material
Cast iron, AISI304 SS
Double mechanical seal

WPF, WPX



Non-clogging self-priming sewage pump

Applications
Rain water and common sewage / Industrial sewage water / Wine and sugar industry / Sewage water in the city

Performance range
Flow range: up to 700 m³/h
Head: up to 70 m
Temperature: up to +100 °C
Power: up to 90 kW

Operation conditions
Non-flammable and non-explosive liquid
Sewage and raw waters from dams, rivers and lakes

Material
Cast Iron, AISI304 SS

HC

Electronic pump controllers

Applications
Residential and irrigation installations

Performance range
Automatic device for electric pump integral control

Electronic pressure switch with dry contact output for control panels

Electronic pressure switch

Automatic digital pumpdriver G1 ¼". On-off and pressure-dependent mode

HC1



HC2



HC3



HC4



VSD1-5

Variable frequency driver

Applications
Industrial and irrigation installations

Performance range
Energy savings

Process control and regulation

Speeding up or slowing down

Smart system control: Electrical protections, alarms & input/output data management

VSD1



VSD2



VSD3



VSD5



XBOOST

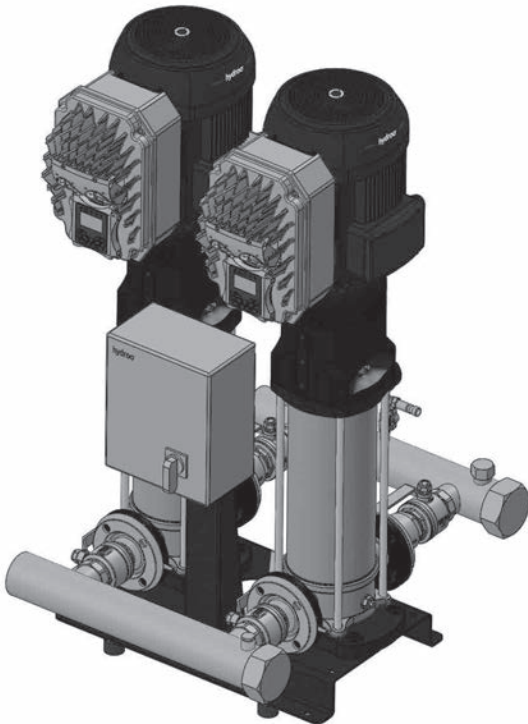
Variable speed booster sets

Applications
Water supply for residential & public buildings / Garden irrigation / Water supply for industrial uses / Other applications

Performance range
Flow range: up to 1440 m³/h
Head: up to 305 m
Temperature: up to +120 °C
Speed: 2900 rpm or 3500 rpm
Size: up to 4 pump units as standard.

Operation conditions
Clean, non-flammable and non-explosive liquid
Liquid temperature: -15 °C to +120 °C
Ambient temperature: up to +40 °C

Material
Cast Iron, AISI304 SS, AISI316 SS



X-FIRE

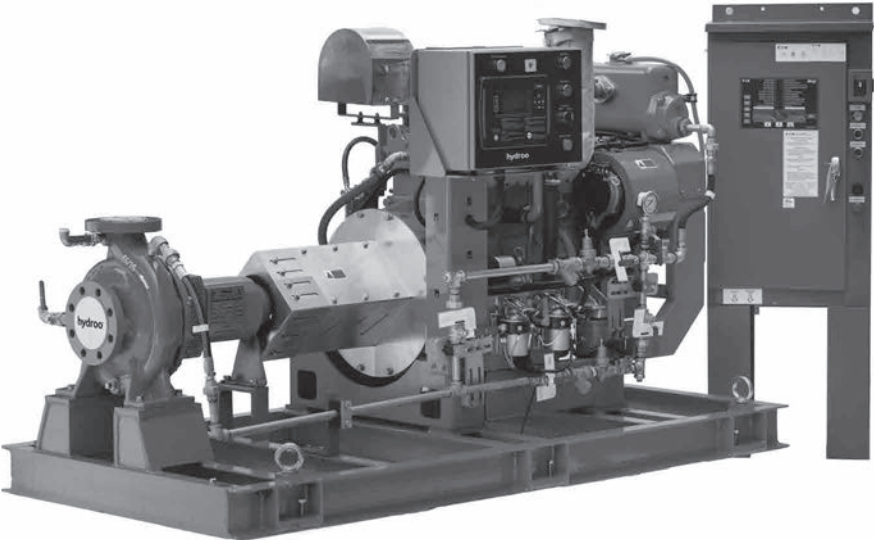
Packaged Fire-fighting sets

Applications
Fire service applications including: Office buildings / Hospitals / Airports / Manufacturing facilities / Warehouses / Power station / Schools / Hotels

Performance range
Flow range: up to 4500 m³/h
Head: up to 200 m
Electric or diesel drivers
Standards: EN12845

Operation conditions
Clean, non-flammable and non-explosive liquid

Material
Cast Iron, AISI304 SS



Notes



202204-BRO-GEN-EN
subject to amendments

BE PUMPING PARTNERS

HYDROO **Pump Industries SL**

Carrer La Banyeta Nova, 11
Poligon Industrial La Banyeta
17843 Palol de Revardit
Catalonia. Spain

Tel. +34 972 394 654
E-mail: info@hydroo.com

www.hydroo.com

hydroo®